



User assumes all risk associated with the use of this map. Inaccuracies may exist and conditions do change. Map does not show all trails.

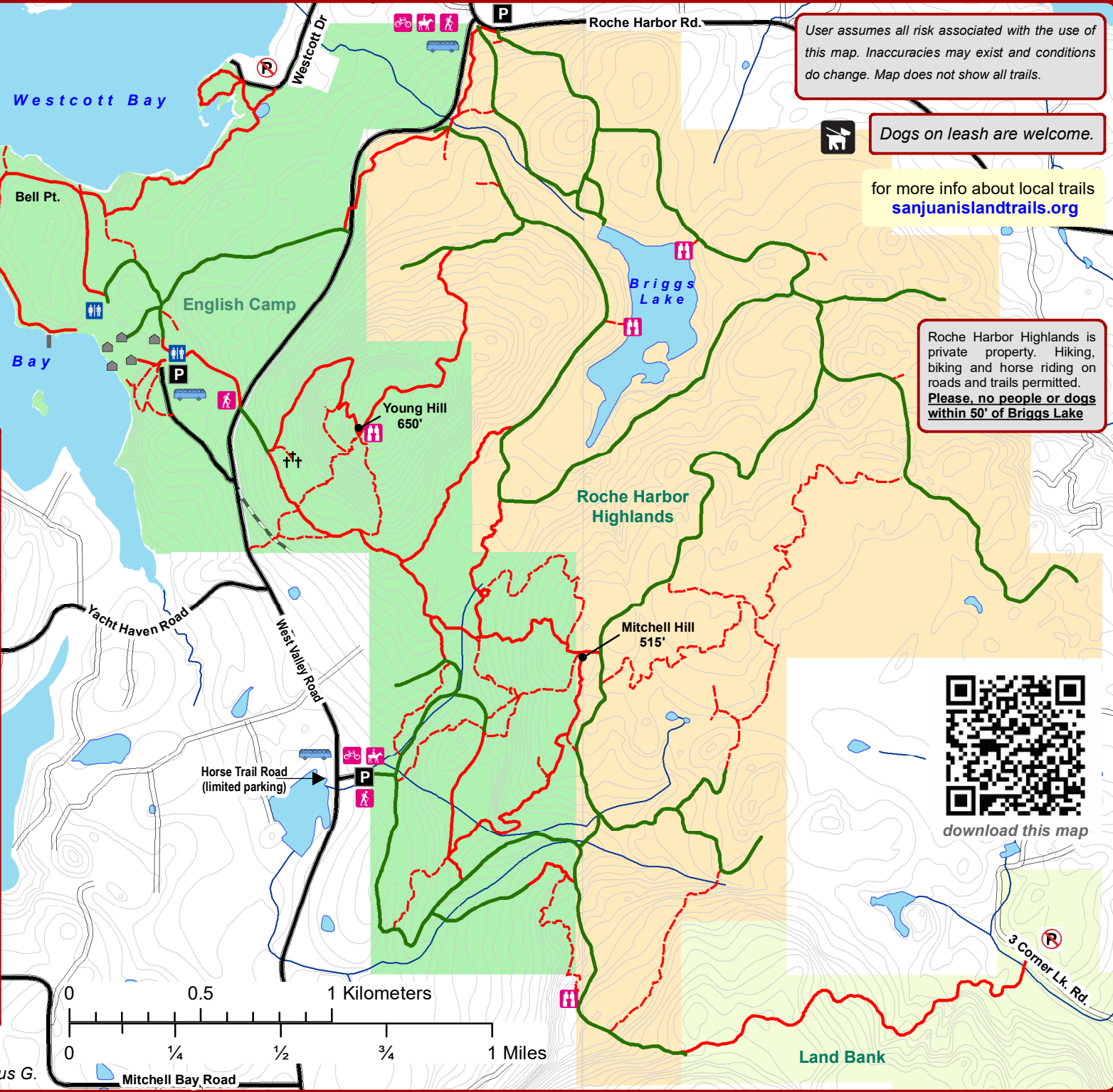
Dogs on leash are welcome.

for more info about local trails
sanjuanislandtrails.org

Roche Harbor Highlands is private property. Hiking and horse riding on roads and trails permitted. **Please, no people or dogs within 50' of Briggs Lake**

Legend

- SJ Island National Historical Park
- Roche Harbor Highlands
- SJ Co. Conservation Land Bank
- Private Property no trespassing
- Service Roads
- Main Trails
- Secondary Trails
- Old Military Road
- Buildings
- P Parking
- ♂ ♀ Restroom
- † † Cemetery
- 🐎 Horseback Riding
- 🚶 Hiking
- 🚲 Bike Riding
- 👁 Viewpoint
- 🚌 Bus, seasonal (flag stop)



download this map