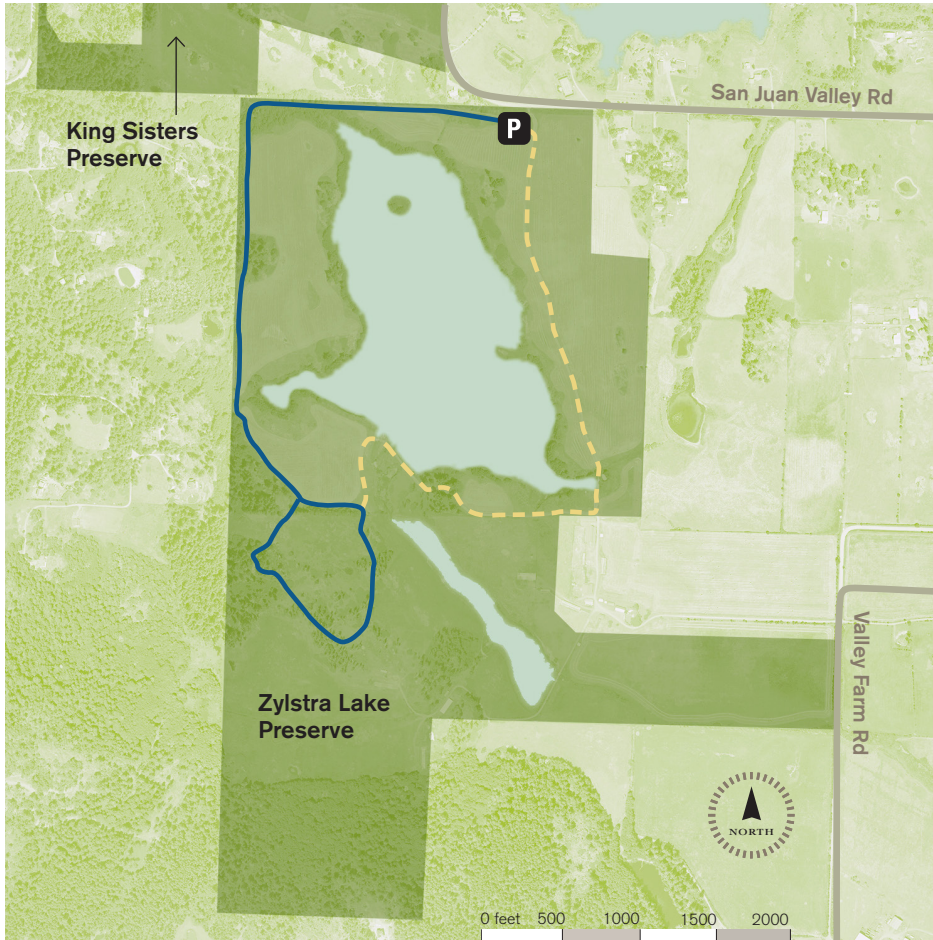


ZYLSTRA LAKE PRESERVE





San Juan Island



Directions

From the Friday Harbor ferry landing:

Turn left onto Spring Street and continue out of town. At 1.7 miles, road name changes to San Juan Valley Road. At 3.5 miles Zylstra Lake is on the left. Parking exists for 10 cars.

-  Land Bank Preserves
-  Trail (open all year)
-  Trail (open April–Sept)
-  Parking

When you visit:

- Stay on designated trails.
- Daytime and pedestrian use only.
- Dogs allowed April–September only, and must be on leash.
- Take nothing.
- Leave nothing.
- Water access is not permitted.

The permanent conservation of the land and waters that make up **Zylstra Lake Preserve** presents amazing opportunities for the residents of San Juan County, human and non-human alike. The protected lake and stream are important features of the False Bay watershed, whose health directly affects the marine environment of False Bay. The agricultural fields support local food and hay production. It is estimated that around 107 species of birds utilize the lake, forests, thickets and grasslands of Zylstra Lake Preserve, making it an excellent destination for bird watching at any time of the year, though the wintering waterfowl on the lake represent a unique opportunity for bird watchers on the island.

Zylstra Lake was purchased in partnership with the San Juan Preservation Trust with funding from the US Fish and Wildlife Service dedicated to preserving coastal wetlands, an ecosystem in decline across the nation.



SAN JUAN COUNTY
LAND BANK

360-378-4402
www.sjlandbank.org
sjlandbank@sjlandbank.org